



**Technische Berufsschule Zürich TBZ**

Hallenbelegung Sport

Version vom 26.09.2018



# Rotationsplan Sport Schuljahr 2018/2019

Woche	Datum Wo-Beginn	Halle 901	Halle 701	Kletterhalle Fitnessraum	Quartal
34	20.08.	AT	EE	IT	1
35	27.08.	IT	AT	EE	1
36	03.09.	EE	IT	AT	1
37	10.09.	AT	EE	IT	1
38	17.09.	IT	AT	EE	1
39	24.09.	EE	IT	AT	1
40	01.10.	AT	EE	IT	1
41	08.10.	Herbstferien			1
42	15.10.	Herbstferien			1
43	22.10.	IT	AT	EE	1
44	29.10.	EE	IT	AT	1
45	05.11.	AT	EE	IT	1
46	12.11.	IT	AT	EE	2!
47	19.11.	EE	IT	AT	2
48	26.11.	AT	EE	IT	2
49	03.12.	IT	AT	EE	2
50	10.12.	EE	IT	AT	2
51	17.12.	AT	EE	IT	2
52	24.12.	Weihnachtsferien			
1	31.12.	Weihnachtsferien			
2	07.01.	IT	AT	EE	2
3	14.01.	EE	IT	AT	2
4	21.01.	AT	EE	IT	2

5	28.01.	IT	AT	EE	2
6	04.02.	Sportferien			
7	11.02.	Sportferien			
8	18.02.	EE	IT	AT	3!
9	25.02.	AT	EE	IT	3
10	04.03.	IT	AT	EE	3
11	11.03.	EE	IT	AT	3
12	18.03.	AT	EE	IT	3
13	25.03.	IT	AT	EE	3
14	01.04.	EE	IT	AT	3
15	08.04.	AT	EE	IT	3
16	15.04.	IT	AT	EE	3
17	22.04.	Frühjahrsferien			
18	29.04.	Frühjahrsferien			
19	06.05.	EE	IT	AT	3
20	13.05.	AT	EE	IT	4!
21	20.05.	IT	AT	EE	4
22	27.05.	EE	IT	AT	4
23	03.06.	AT	EE	IT	4
24	10.06.	IT	AT	EE	4
25	17.06.	EE	IT	AT	4
26	24.06.	AT	EE	IT	4
27	01.07.	IT	AT	EE	4
28	08.07.	EE	IT	AT	4

## Stundenplan Abteilung AT (= Belegungsplan Garderobe SQ 601)

	Montag	Dienstag	Mittwoch	Donnerstag	Freitag
07.15 – 08.00				RUD CS18B	BAR EP18b (Abt. EE)
08.10 – 08.55		ZGR AF18D	RUD AF18B	RUD AM15C	VGR EN17a (Abt. EE)
09.15 – 10.00	ZGR AM15A	ZGR AM18A	RUD AF16D	RUD CS15C	RUD AA17A
10.10 – 10.55	ZGR AF16B	TAV AF16E	TAV AM15B RUD AF18A (bis Herbst: Halle IT)	TAV CS16B	RUD CS18A
11.05 – 11.50	ZGR AM18C	TAV CS15B	TAV CS17B		RUD AF17E
		ZGR AF17F		ab Herbst: RUD AF18A	
13.00 – 13.45	GRL BI17a (Q1/3) (Abt. IT)	ZGR AF17B	RUD AF17D	RUD AF17C	RUD AF18C
13.55 – 14.40	ZGR AA17B	ZGR AF17A	RUD AF16A	RUD AA18A	RUD AM16B
15.00 – 15.45	ZGR AM16A	ZGR AM17B	RUD AA18B	TAV AF16C	RUD AF18F
15.55 – 16.40	ZGR CS16A	ZGR CS17A	RUD AM16C	TAV AM18B	RUD AF16F
16.50 – 17.35				TAV AM17A	

## Stundenplan Abteilung EE (= Belegungsplan Garderobe SQ 602)

	Montag	Dienstag	Mittwoch	Donnerstag	Freitag
07.10 – 07.55	VGR EI17b	HOI EI18a		BAR EP16a	BIJ EN18a BAR EP18b (Halle AT)
08.05 – 08.50	REC EI18b			BAR MM18a	BIJ MM 16b VGR EN17a (Halle AT)
09.00 – 09.45		PLU EI18d	GRL EI18f	BAR ME17d	BIJ EI18e
10.15 – 11.00	VGR EI16c	PLU TM17b	GRL EI16d	BAR EI17d	
11.10 – 11.55	REC EI18c	PLU EP16b	GRL ME17c	BAR EI17f	BAR EI17e
12.05 – 12.50	REC BEN16a	PLU ME17b		GRL BEN18a	BAR BEN17a
13.00 – 13.45	PLU TM17a	PLU ME18b	GRL ME18c	GRL EI16e	
13.55 – 14.40	GRL BI17a (Q1/3) (Abt. IT)	BIJ VF16a (Q1/3) (Abt. IT)	STF BI17c (Q1/3) (Abt. IT) STF IP17a (Q2/4) (Abt. IT)	GRL EI16b	
14.50 – 15.35	PLU ME17a	PLU EP17b	STF BI17c (Q1/3) (Abt. IT)	KRE EP17a	
15.45 – 16.30	PLU ME18a			VGR EI17a	VGR EI16f
16.40 – 17.25	PLU EN16a/MM16a	KRE MM17a	KRE EP18a	VGR ME18d	

## Stundenplan Abteilung IT 1. Quartal (= Belegungsplan Garderobe SQ 603)

	Montag	Dienstag	Mittwoch	Donnerstag	Freitag
08.10 – 08.55		STF ICT18b (Q1-4) REC ST18a (Q1-4) ( <b>extern</b> )	SGE BI18b (Q1-4)	STF ST17c (Q1/3)	OTU ICT18c (Q1-4)
09.05 – 09.50		STF ICT18b (Q1-4) REC ST18a (Q1-4) ( <b>extern</b> )	SGE BI18b (Q1-4)	STF ST17c (Q1/3)	OTU ICT18c (Q1-4)
10.10 – 10.55	SGE BI18a (Q1-4)	SGE ST16c (Q1/3)	<i>bis Herbst: RUD AF18a (Abt. AT)</i>		OTU ST18c (Q1-4)
11.05 – 11.50	SGE BI18a (Q1-4) GRL BI17b (Q1/3) ( <b>extern</b> )	STF ICT18a (Q1-4) SGE ST16c (Q1/3) ( <b>extern</b> )		REC ICT18d (Q1-4) ( <b>extern</b> )	OTU ST18c (Q1-4)
12.00 – 12.45	GRL BI17b (Q1/3) ( <b>extern</b> )	STF ICT18a (Q1-4)		SGE OP18d (Q1-4) REC ICT18d (Q1-4) ( <b>extern</b> )	
13.00 – 13.45	REC AP16a (Q1-4) GRL BI17a (Q1/3) ( <b>Halle AT</b> )	SGE OP18b (Q1/3)		REC AP17c (Q1/3)	OTU ST16f (Q1/3)
13.55 – 14.40	OTU AP18a (Q1-4) GRL BI17a (Q1/3) ( <b>Halle EE</b> )	SGE OP18b (Q1/3) BIJ VF16a (Q1/3) ( <b>Halle EE</b> )	GRL VF15a (Q1-4) STF BI17c (Q1/3) ( <b>Halle EE</b> )	REC AP17c (Q1/3) STF AP18b (Q1-4) ( <b>extern</b> )	OTU ST16f (Q1/3)
15.00 – 15.45	OTU AP18a (Q1-4)	BIJ VF16a (Q1/3)	GRL VF18b (Q1-4) STF BI17c (Q1/3) ( <b>Halle EE</b> )	SGE OP18e (Q1-4) STF AP18b (Q1-4) ( <b>extern</b> )	
15.55 – 16.40	OTU AP17a (Q1/3)	BIJ ST17a (Q1/3)	STF OP17c (Q1/3)	STF ST18d (Q1-4) OTU AP16b (Q1/3) ( <b>extern</b> )	REC ST17e (Q1/3)
16.50 – 17.35	OTU AP17a/b (Q1/3)	BIJ ST17a (Q1/3)	STF OP17c (Q1/3)	STF ST18d (Q1-4) OTU AP16b (Q1/3) ( <b>extern</b> )	REC ST17e (Q1/3)

## Stundenplan Abteilung IT 2. Quartal (= Belegungsplan Garderobe SQ 603)

	Montag	Dienstag	Mittwoch	Donnerstag	Freitag
08.10 – 08.55		STF ICT18b (Q1-4) REC ST18a (Q1-4) ( <b>extern</b> )	SGE BI18b (Q1-4)		OTU ICT18c (Q1-4)
09.05 – 09.50		STF ICT18b (Q1-4) REC ST18a (Q1-4) ( <b>extern</b> )	SGE BI18b (Q1-4)		OTU ICT18c (Q1-4)
10.10 – 10.55	SGE BI18a (Q1-4)			STF ST16d (Q2/3)	OTU ST18c (Q1-4)
11.05 – 11.50	SGE BI18a (Q1-4)	STF ICT18a (Q1-4) REC OP17a (Q2/4) ( <b>extern</b> )	REC OP17b (Q2/4)	STF ST16d (Q2/3) REC ICT18d (Q1-4) ( <b>extern</b> )	OTU ST18c (Q1-4)
12.00 – 12.45		STF ICT18a (Q1-4) REC OP17a (Q2/4) ( <b>extern</b> )	REC OP17b (Q2/4)	SGE OP18d (Q1-4) REC ICT18d (Q1-4) ( <b>extern</b> )	
13.00 – 13.45	REC AP16a (Q1-4)	SGE OP18a (Q2/4)	STF IP17a (Q2/4)	SGE OP18c (Q2/4) REC OP17e (Q2/4) ( <b>extern</b> )	OTU BI16b (Q2/4)
13.55 – 14.40	OTU AP18a (Q1-4)	SGE OP18a (Q2/4) BIJ ST16a (Q2/4) ( <b>extern</b> )	GRL VF15a (Q1-4) STF IP17a (Q2/4) ( <b>extern</b> )	SGE OP18c (Q2/4) STF AP18b (Q1-4) ( <b>extern</b> )	OTU BI16b (Q2/4)
15.00 – 15.45	OTU AP18a (Q1-4) REC VF18a (Q2/4) ( <b>extern</b> )	SGE VF17a (Q2/4) BIJ ST16a (Q2/4) ( <b>extern</b> )	GRL VF18b (Q1-4)	SGE OP18e (Q1-4) STF AP18b (Q1-4) ( <b>extern</b> )	
15.55 – 16.40	OTU BI16a (Q2/4) REC VF18a (Q2/4) ( <b>extern</b> )	SGE VF17a (Q2/4)		STF ST18d (Q1-4) OTU OP17d (Q2/4) ( <b>extern</b> )	
16.50 – 17.35	OTU BI16a (Q2/4)			STF ST18d (Q1-4) OTU OP17d (Q2/4) ( <b>extern</b> )	

### Stundenplan Abteilung IT 3. Quartal (= Belegungsplan Garderobe SQ 603)

	Montag	Dienstag	Mittwoch	Donnerstag	Freitag
08.10 – 08.55		STF ICT18b (Q1-4) REC ST18a (Q1-4) ( <b>extern</b> )	SGE BI18b (Q1-4)	STF ST17c (Q1/3)	OTU ICT18c (Q1-4)
09.05 – 09.50		STF ICT18b (Q1-4) REC ST18a (Q1-4) ( <b>extern</b> )	SGE BI18b (Q1-4)	STF ST17c (Q1/3)	OTU ICT18c (Q1-4)
10.10 – 10.55	SGE BI18a (Q1-4)	SGE ST16c (Q1/3)		STF ST16d (Q2/3)	OTU ST18c (Q1-4)
11.05 – 11.50	SGE BI18a (Q1-4) GRL BI17b (Q1/3) ( <b>extern</b> )	STF ICT18a (Q1-4) SGE ST16c (Q1/3) ( <b>extern</b> )		STF ST16d (Q2/3) REC ICT18d (Q1-4) ( <b>extern</b> )	OTU ST18c (Q1-4)
12.00 – 12.45	GRL BI17b (Q1/3) ( <b>extern</b> )	STF ICT18a (Q1-4)		SGE OP18d (Q1-4) REC ICT18d (Q1-4) ( <b>extern</b> )	
13.00 – 13.45	REC AP16a (Q1-4) GRL BI17a (Q1/3) ( <b>Halle AT</b> )	SGE OP18b (Q1/3)		REC AP17c (Q1/3)	OTU ST16f (Q1/3)
13.55 – 14.40	OTU AP18a (Q1-4) GRL BI17a (Q1/3) ( <b>Halle EE</b> )	SGE OP18b (Q1/3) BIJ VF16a (Q1/3) ( <b>Halle EE</b> )	GRL VF15a (Q1-4) STF BI17c (Q1/3) ( <b>Halle EE</b> )	REC AP17c/d (Q1/3) STF AP18b (Q1-4) ( <b>extern</b> )	OTU ST16f (Q1/3)
15.00 – 15.45	OTU AP18a (Q1-4)	BIJ VF16a (Q1/3)	GRL VF18b (Q1-4) STF BI17c (Q1/3) ( <b>Halle EE</b> )	SGE OP18e (Q1-4) STF AP18b (Q1-4) ( <b>extern</b> )	
15.55 – 16.40	OTU AP17a (Q1/3)	BIJ ST17a (Q1/3)	STF OP17c (Q1/3)	STF ST18d (Q1-4) OTU AP16b (Q1/3) ( <b>extern</b> )	REC ST17e (Q1/3)
16.50 – 17.35	OTU AP17a/b (Q1/3)	BIJ ST17a (Q1/3)	STF OP17c (Q1/3)	STF ST18d (Q1-4) OTU AP16b (Q1/3) ( <b>extern</b> )	REC ST17e (Q1/3)



## Stundenplan Abteilung IT 4. Quartal (= Belegungsplan Garderobe SQ 603)

	Montag	Dienstag	Mittwoch	Donnerstag	Freitag
08.10 – 08.55		STF ICT18b (Q1-4) REC ST18a (Q1-4) ( <b>extern</b> )	SGE BI18b (Q1-4)		OTU ICT18c (Q1-4)
09.05 – 09.50		STF ICT18b (Q1-4) REC ST18a (Q1-4) ( <b>extern</b> )	SGE BI18b (Q1-4)		OTU ICT18c (Q1-4)
10.10 – 10.55	SGE BI18a (Q1-4)			OTU BI16c (Q4)	OTU ST18c (Q1-4)
11.05 – 11.50	SGE BI18a (Q1-4)	STF ICT18a (Q1-4) REC OP17a (Q2/4) ( <b>extern</b> )	REC OP17b (Q2/4)	OTU BI16c (Q4) REC ICT18d (Q1-4) ( <b>extern</b> )	OTU ST18c (Q1-4)
12.00 – 12.45		STF ICT18a (Q1-4) REC OP17a (Q2/4) ( <b>extern</b> )	REC OP17b (Q2/4)	SGE OP18d (Q1-4) REC ICT18d (Q1-4) ( <b>extern</b> )	
13.00 – 13.45	REC AP16a (Q1-4)	SGE OP18a (Q2/4)	STF IP17a (Q2/4)	SGE OP18c (Q2/4) REC OP17e (Q2/4) ( <b>extern</b> )	OTU BI16b (Q2/4)
13.55 – 14.40	OTU AP18a (Q1-4)	SGE OP18a (Q2/4) BIJ ST16a (Q2/4) ( <b>extern</b> )	GRL VF15a (Q1-4) STF IP17a (Q2/4) ( <b>extern</b> )	SGE OP18c (Q2/4) STF AP18b (Q1-4) ( <b>extern</b> )	OTU BI16b (Q2/4)
15.00 – 15.45	OTU AP18a (Q1-4) REC VF18a (Q2/4) ( <b>extern</b> )	SGE VF17a (Q2/4) BIJ ST16a (Q2/4) ( <b>extern</b> )	GRL VF18b (Q1-4)	SGE OP18e (Q1-4) STF AP18b (Q1-4) ( <b>extern</b> )	
15.55 – 16.40	OTU BI16a (Q2/4) REC VF18a (Q2/4) ( <b>extern</b> )	SGE VF17a (Q2/4)		STF ST18d (Q1-4) OTU OP17d (Q2/4) ( <b>extern</b> )	
16.50 – 17.35	OTU BI16a (Q2/4)			STF ST18d (Q1-4) OTU OP17d (Q2/4) ( <b>extern</b> )	

**Belegungsplan Garderobe SQ 605 (Q1: 20.8.-11.11.; Q2: 12.11.-01.02; Q3: 18.02-12.05; Q4: 13.05.-12.07)**

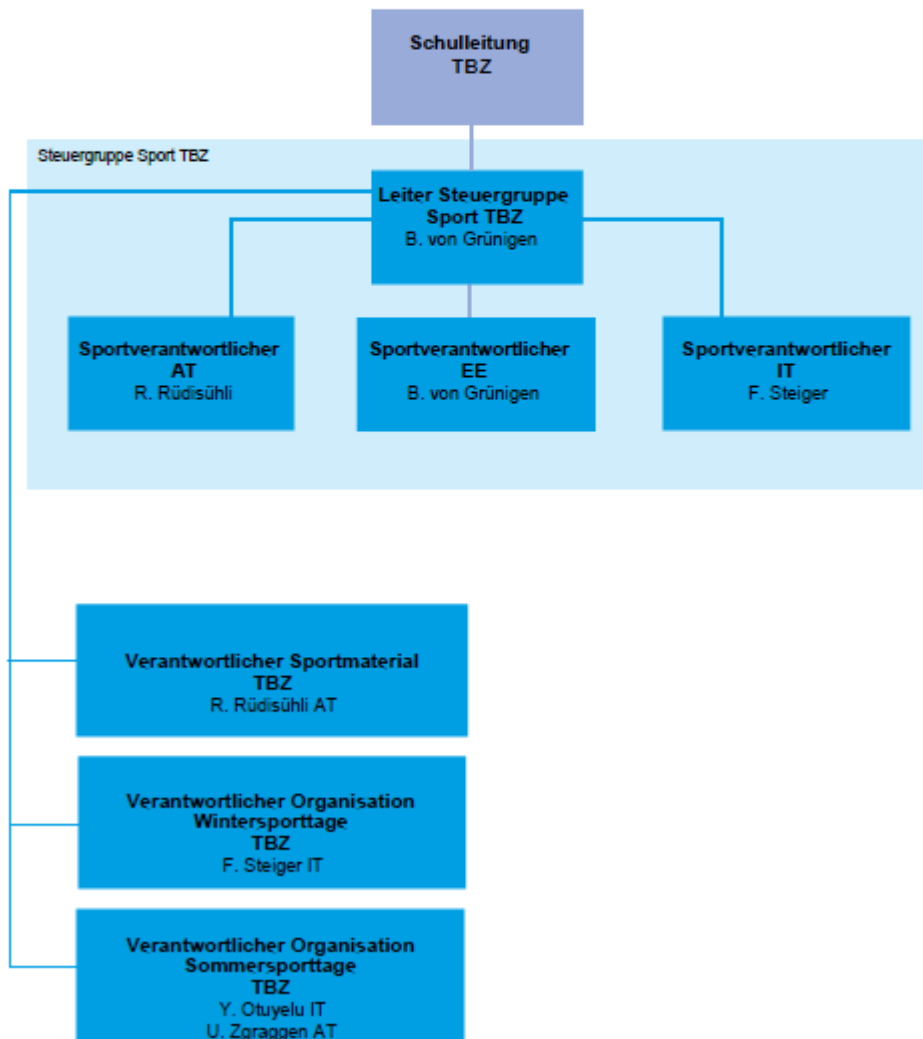
	Montag	Dienstag	Mittwoch	Donnerstag	Freitag
08.10 – 08.55		REC ST18a (Q2-4)			
09.05 – 09.50		REC ST18a (Q2-4)			
10.10 – 10.55		SGE ST16c (Q3)			
11.05 – 11.50	GRL BI17b (Q1/3)	SGE ST16c (Q3) REC OP17a (Q2/4)		REC ICT18d (Q2-4)	
12.00 – 12.45	GRL BI17b (Q1/3)	REC OP17a (Q2/4)		REC ICT18d (Q2-4)	
13.00 – 13.45	GRL BI17a (Q1/3)		STF IP17a (Q2/4)	REC OP17e (Q2/4)	
13.55 – 14.40	GRL BI17a (Q1/3)	BIJ VF16a (Q1/3) BIJ ST16a (Q2/4)	STF IP17a (Q2/4)	STF AP18b (Q2-4)	
15.00 – 15.45	REC VF18a (Q2/4)	BIJ VF16a (Q1/3) BIJ ST16a (Q2/4)		STF AP18b (Q2-4)	
15.55 – 16.40	REC VF18a (Q2/4)			OTU AP16b (Q1/3) OTU OP17d (Q2/4)	
16.50 – 17.35				OTU AP16b (Q1/3) OTU OP17d (Q2/4)	



Kanton Zürich  
Technische Berufsschule Zürich

# Organisation Sport

ab Schuljahr 18/19



## Verteilerliste

- Alle Sportlehrpersonen (print)
- Hausmeister SQ 101 (print)
- Hausmeister AU 70 (print)
- Sekretariate Grundbildung (AT/EE/IT) (elektronisch)
- Rektorat (elektronisch)
- Technischer Dienst (elektronisch)
- Verantwortlicher Sport in der Schulleitung: Klaus Schmid (elektronisch)
- Stundenplaner der einzelnen Abteilungen (AT/EE/IT) (elektronisch)