



Technische Berufsschule Zürich TBZ

Hallenbelegung Sport

Version vom 14.02.2019
(ersetzt Version vom 26.09.2018)

Rotationsplan Sport Schuljahr 2018/2019

Woche	Datum Wo-Beginn	Halle 901	Halle 701	Kletterhalle Fitnessraum	Quartal
34	20.08.	AT	EE	IT	1
35	27.08.	IT	AT	EE	1
36	03.09.	EE	IT	AT	1
37	10.09.	AT	EE	IT	1
38	17.09.	IT	AT	EE	1
39	24.09.	EE	IT	AT	1
40	01.10.	AT	EE	IT	1
41	08.10.	Herbstferien			1
42	15.10.	Herbstferien			1
43	22.10.	IT	AT	EE	1
44	29.10.	EE	IT	AT	1
45	05.11.	AT	EE	IT	1
46	12.11.	IT	AT	EE	2!
47	19.11.	EE	IT	AT	2
48	26.11.	AT	EE	IT	2
49	03.12.	IT	AT	EE	2
50	10.12.	EE	IT	AT	2
51	17.12.	AT	EE	IT	2
52	24.12.	Weihnachtsferien			
1	31.12.	Weihnachtsferien			
2	07.01.	IT	AT	EE	2
3	14.01.	EE	IT	AT	2
4	21.01.	AT	EE	IT	2

5	28.01.	IT	AT	EE	2
6	04.02.	Sportferien			
7	11.02.	Sportferien			
8	18.02.	EE	IT	AT	3!
9	25.02.	AT	EE	IT	3
10	04.03.	IT	AT	EE	3
11	11.03.	EE	IT	AT	3
12	18.03.	AT	EE	IT	3
13	25.03.	IT	AT	EE	3
14	01.04.	EE	IT	AT	3
15	08.04.	AT	EE	IT	3
16	15.04.	IT	AT	EE	3
17	22.04.	Frühjahrsferien			
18	29.04.	Frühjahrsferien			
19	06.05.	EE	IT	AT	3
20	13.05.	AT	EE	IT	4!
21	20.05.	IT	AT	EE	4
22	27.05.	EE	IT	AT	4
23	03.06.	AT	EE	IT	4
24	10.06.	IT	AT	EE	4
25	17.06.	EE	IT	AT	4
26	24.06.	AT	EE	IT	4
27	01.07.	IT	AT	EE	4
28	08.07.	EE	IT	AT	4

Stundenplan Abteilung AT (= Belegungsplan Garderobe SQ 601)

	Montag	Dienstag	Mittwoch	Donnerstag	Freitag
07.15 – 08.00				RUD CS18B	BAR EP18b (Abt. EE)
08.10 – 08.55	ZGR AF16B	ZGR AF18D	RUD AF18B	RUD AM15C	GRU EN17a (Abt. EE)
09.15 – 10.00	ZGR AM15A	ZGR AM18A	RUD AF16D	RUD CS15C	RUD AA17A
10.10 – 10.55		TAV AF16E	TAV AM15B	TAV CS16B	RUD CS18A
11.05 – 11.50	ZGR AM18C	TAV CS15B	TAV CS17B		RUD AF17E
12.00 – 12.45		ZGR AF17F		RUD AF18A	
13.00 – 13.45		ZGR AF17B	RUD AF17D	RUD AF17C	RUD AF18C
13.55 – 14.40	ZGR AA17B	ZGR AF17A	RUD AF16A	RUD AA18A	RUD AM16B
15.00 – 15.45	ZGR AM16A	ZGR AM17B	RUD AA18B	TAV AF16C	RUD AF18F
15.55 – 16.40	ZGR CS16A	ZGR CS17A	RUD AM16C	TAV AM18B	RUD AF16F
16.50 – 17.35				TAV AM17A	

Stundenplan Abteilung EE (= Belegungsplan Garderobe SQ 602)

	Montag	Dienstag	Mittwoch	Donnerstag	Freitag
07.10 – 07.55	GRU EI17b	HOI EI18a		BAR EP16a	BIJ EN18a BAR EP18b (Halle AT)
08.05 – 08.50	REC EI18b	PLU EP16b	GRL ME17e	BAR MM18a	BIJ MM 16b GRU EN17a (Halle AT)
09.00 – 09.45		PLU EI18d	GRL EI18f	BAR ME17d	BIJ EI18e
10.15 – 11.00	GRU EI16c		GRL EI16d	BAR EI17d	
11.10 – 11.55	REC EI18c	PLU EP17b	GRL ME17c	BAR ME18d	BAR EI17e
12.05 – 12.50	PLU BEN16a	PLU ME17b		GRL BEN18a	BAR BEN17a
13.00 – 13.45		PLU ME18b		GRL EI16b	
13.55 – 14.40	PLU TM18a	REC TM18b	STF BI17c (Q1/3) (Abt. IT) STF IP17a (Q2/4) (Abt. IT)	GRL EI16e	
14.50 – 15.35	PLU ME17a		STF BI17c (Q1/3) (Abt. IT)	KRE EP17a	
15.45 – 16.30	PLU ME18a		GRL ME18c	GRL EI17a	GRU EI16f
16.40 – 17.25	PLU EN16a/MM16a	KRE MM17a	SPI EP18a	GRU EI17f	

Stundenplan Abteilung IT 1. Quartal (= Belegungsplan Garderobe SQ 603)

	Montag	Dienstag	Mittwoch	Donnerstag	Freitag
08.10 – 08.55		STF ICT18b (Q1-4) REC ST18a (Q1-4) (extern)	SGE BI18b (Q1-4)	STF ST17c (Q1/3)	OTU ICT18c (Q1-4)
09.05 – 09.50		STF ICT18b (Q1-4) REC ST18a (Q1-4) (extern)	SGE BI18b (Q1-4)	STF ST17c (Q1/3)	OTU ICT18c (Q1-4)
10.10 – 10.55	SGE BI18a (Q1-4)	SGE ST16c (Q1/3)			OTU ST18c (Q1-4)
11.05 – 11.50	SGE BI18a (Q1-4) GRL BI17b (Q1/3) (extern)	STF ICT18a (Q1-4) SGE ST16c (Q1/3) (extern)		REC ICT18d (Q1-4) (extern)	OTU ST18c (Q1-4)
12.00 – 12.45	GRL BI17b (Q1/3) (extern)	STF ICT18a (Q1-4)		SGE OP18d (Q1-4) REC ICT18d (Q1-4) (extern)	
13.00 – 13.45	REC AP16a (Q1-4) GRL BI17a (Q1/3) (Halle AT)	SGE OP18b (Q1/3)		REC AP17c (Q1/3)	OTU ST16f (Q1/3)
13.55 – 14.40	OTU AP18a (Q1-4) GRL BI17a (Q1/3) (Halle EE)	SGE OP18b (Q1/3) BIJ VF16a/b (Q1/3) (extern)	GRL VF15a (Q1-4) STF BI17c (Q1/3) (Halle EE)	REC AP17c (Q1/3) STF AP18b (Q1-4) (extern)	OTU ST16f (Q1/3)
15.00 – 15.45	OTU AP18a (Q1-4)	BIJ VF16a/b (Q1/3) (extern)	GRL VF18b (Q1-4) STF BI17c (Q1/3) (Halle EE)	SGE OP18e (Q1-4) STF AP18b (Q1-4) (extern)	
15.55 – 16.40	OTU AP17a (Q1/3)	BIJ ST17a (Q1/3)	STF OP17c (Q1/3)	STF ST18d (Q1-4) OTU AP16b (Q1/3) (extern)	REC ST17e (Q1/3)
16.50 – 17.35	OTU AP17a/b (Q1/3)	BIJ ST17a (Q1/3)	STF OP17c (Q1/3)	STF ST18d (Q1-4) OTU AP16b (Q1/3) (extern)	REC ST17e (Q1/3)

Stundenplan Abteilung IT 2. Quartal (= Belegungsplan Garderobe SQ 603)

	Montag	Dienstag	Mittwoch	Donnerstag	Freitag
08.10 – 08.55		STF ICT18b (Q1-4) REC ST18a (Q1-4) (extern)	SGE BI18b (Q1-4)		OTU ICT18c (Q1-4)
09.05 – 09.50		STF ICT18b (Q1-4) REC ST18a (Q1-4) (extern)	SGE BI18b (Q1-4)		OTU ICT18c (Q1-4)
10.10 – 10.55	SGE BI18a (Q1-4)			STF ST16d (Q2/3)	OTU ST18c (Q1-4)
11.05 – 11.50	SGE BI18a (Q1-4)	STF ICT18a (Q1-4) REC OP17a (Q2/4) (extern)	REC OP17b (Q2/4)	STF ST16d (Q2/3) REC ICT18d (Q1-4) (extern)	OTU ST18c (Q1-4)
12.00 – 12.45		STF ICT18a (Q1-4) REC OP17a (Q2/4) (extern)	REC OP17b (Q2/4)	SGE OP18d (Q1-4) REC ICT18d (Q1-4) (extern)	
13.00 – 13.45	REC AP16a (Q1-4)	SGE OP18a (Q2/4)	STF IP17a (Q2/4)	SGE OP18c (Q2/4) REC OP17e (Q2/4) (extern)	OTU BI16b (Q2/4)
13.55 – 14.40	OTU AP18a (Q1-4)	SGE OP18a (Q2/4) BIJ ST16a (Q2/4) (extern)	GRL VF15a (Q1-4) STF IP17a (Q2/4) (extern)	SGE OP18c (Q2/4) STF AP18b (Q1-4) (extern)	OTU BI16b (Q2/4)
15.00 – 15.45	OTU AP18a (Q1-4) REC VF18a (Q2/4) (extern)	SGE VF17a (Q2/4) BIJ ST16a (Q2/4) (extern)	GRL VF18b (Q1-4)	SGE OP18e (Q1-4) STF AP18b (Q1-4) (extern)	
15.55 – 16.40	OTU BI16a (Q2/4) REC VF18a (Q2/4) (extern)	SGE VF17a (Q2/4)		STF ST18d (Q1-4) OTU OP17d (Q2/4) (extern)	
16.50 – 17.35	OTU BI16a (Q2/4)			STF ST18d (Q1-4) OTU OP17d (Q2/4) (extern)	

Stundenplan Abteilung IT 3. Quartal (= Belegungsplan Garderobe SQ 603)

	Montag	Dienstag	Mittwoch	Donnerstag	Freitag
08.10 – 08.55		STF ICT18b (Q1-4) REC ST18a/b (Q1-4) (extern)	SGE BI18b (Q1-4)	REC ST17c/d (Q1/3)	OTU ICT18c (Q1-4)
09.05 – 09.50		STF ICT18b (Q1-4) REC ST18a/b (Q1-4) (extern)	SGE BI18b (Q1-4)	REC ST17c/d (Q1/3)	OTU ICT18c (Q1-4)
10.10 – 10.55	SGE BI18a (Q1-4)	SGE ST16c (Q1/3) (extern)		STF ST16d/e (Q2/3)	OTU ST18c (Q1-4)
11.05 – 11.50	SGE BI18a (Q1-4) GRL BI17b (Q1/3) (extern)	STF ICT18a (Q1-4) SGE ST16c (Q1/3) (extern)		STF ST16d/e (Q2/3) REC ICT18d (Q1-4) (extern)	OTU ST18c (Q1-4)
12.00 – 12.45	GRL BI17b (Q1/3) (extern)	STF ICT18a (Q1-4)		SGE OP18d (Q1-4) REC ICT18d (Q1-4) (extern)	
13.00 – 13.45	REC AP16a/d (Q1-4) GRL BI17a (Q1/3) (extern)	SGE OP18b (Q1/3)		REC AP17c/d (Q1/3)	OTU ST16f (Q1/3)
13.55 – 14.40	OTU AP18a/d (Q1-4) GRL BI17a (Q1/3) (extern)	SGE OP18b (Q1/3) BIJ VF16a (Q1/3) (extern)	GRL VF15a (Q1-4) STF BI17c (Q1/3) (Halle EE)	REC AP17c/d (Q1/3) STF AP18b/c (Q1-4) (extern)	OTU ST16f (Q1/3)
15.00 – 15.45	OTU AP18a/d (Q1-4)	BIJ VF16a (Q1/3) (extern)	GRL VF18b (Q1-4) STF BI17c (Q1/3) (Halle EE)	SGE OP18e (Q1-4) STF AP18b/c (Q1-4) (extern)	
15.55 – 16.40	OTU AP17a/b (Q1/3)	BIJ ST17a (Q1/3)	STF OP17c (Q1/3)	STF ST18d/e (Q1-4) OTU AP16b/c (Q1/3) (extern)	REC ST17e (Q1/3)
16.50 – 17.35	OTU AP17a/b (Q1/3)	BIJ ST17a (Q1/3)	STF OP17c (Q1/3)	STF ST18d/e (Q1-4) OTU AP16b/c (Q1/3) (extern)	REC ST17e (Q1/3)

Stundenplan Abteilung IT 4. Quartal (= Belegungsplan Garderobe SQ 603)

	Montag	Dienstag	Mittwoch	Donnerstag	Freitag
08.10 – 08.55		STF ICT18b (Q1-4) REC ST18a/b (Q1-4) (extern)	SGE BI18b (Q1-4)		OTU ICT18c (Q1-4)
09.05 – 09.50		STF ICT18b (Q1-4) REC ST18a/b (Q1-4) (extern)	SGE BI18b (Q1-4)		OTU ICT18c (Q1-4)
10.10 – 10.55	SGE BI18a (Q1-4)			OTU BI16c (Q4)	OTU ST18c (Q1-4)
11.05 – 11.50	SGE BI18a (Q1-4)	STF ICT18a (Q1-4) REC OP17a (Q2/4) (extern)	REC OP17b (Q2/4)	OTU BI16c (Q4) REC ICT18d (Q1-4) (extern)	OTU ST18c (Q1-4)
12.00 – 12.45		STF ICT18a (Q1-4) REC OP17a (Q2/4) (extern)	REC OP17b (Q2/4)	SGE OP18d (Q1-4) REC ICT18d (Q1-4) (extern)	
13.00 – 13.45	REC AP16a/d (Q1-4)	SGE OP18a (Q2/4)	STF IP17a (Q2/4) (extern)	SGE OP18c (Q2/4) REC OP17e (Q2/4) (extern)	OTU BI16b (Q2/4)
13.55 – 14.40	OTU AP18a (Q1-4)	SGE OP18a (Q2/4) BIJ ST16a (Q2/4) (extern)	GRL VF15a (Q1-4) STF IP17a (Q2/4) (extern)	SGE OP18c (Q2/4) STF AP18b/c (Q1-4) (extern)	OTU BI16b (Q2/4)
15.00 – 15.45	OTU AP18a/d (Q1-4) REC VF18a (Q2/4) (extern)	SGE VF17a (Q2/4) BIJ ST16a (Q2/4) (extern)	GRL VF18b (Q1-4)	SGE OP18e (Q1-4) STF AP18b/c (Q1-4) (extern)	
15.55 – 16.40	OTU BI16a (Q2/4) REC VF18a (Q2/4) (extern)	SGE VF17a (Q2/4)		STF ST18d/e (Q1-4) OTU OP17d (Q2/4) (extern)	
16.50 – 17.35	OTU BI16a (Q2/4)			STF ST18d/e (Q1-4) OTU OP17d (Q2/4) (extern)	

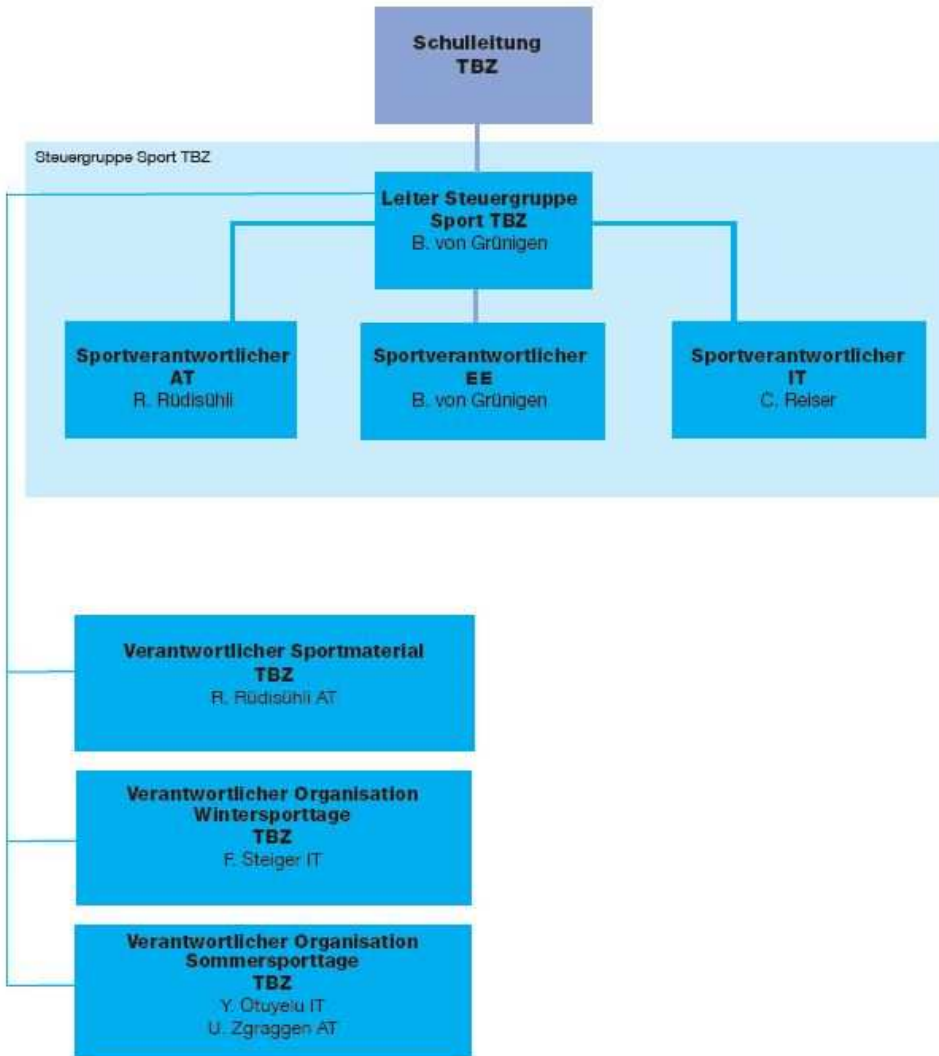
Belegungsplan Garderobe SQ 605 (Q1: 20.8.-11.11.; Q2: 12.11.-01.02; Q3: 18.02-12.05; Q4: 13.05.-12.07)

	Montag	Dienstag	Mittwoch	Donnerstag	Freitag
08.10 – 08.55		REC ST18a/b (Q1-4)			
09.05 – 09.50		REC ST18a/b (Q1-4)			
10.10 – 10.55		SGE ST16c (Q3)			
11.05 – 11.50	GRL BI17b (Q1/3)	SGE ST16c (Q3) REC OP17a (Q2/4)		REC ICT18d (Q2-4)	
12.00 – 12.45	GRL BI17b (Q1/3)	REC OP17a (Q2/4)		REC ICT18d (Q2-4)	
13.00 – 13.45	GRL BI17a (Q1/3)		STF IP17a (Q2/4)	REC OP17e (Q2/4)	
13.55 – 14.40	GRL BI17a (Q1/3)	BIJ VF16a (Q1/3) BIJ ST16a (Q2/4)	STF IP17a (Q2/4)	STF AP18b/c (Q2-4)	
15.00 – 15.45	REC VF18a (Q2/4)	BIJ VF16a (Q1/3) BIJ ST16a (Q2/4)		STF AP18b/c (Q2-4)	
15.55 – 16.40	REC VF18a (Q2/4)			OTU AP16b/c (Q1/3) OTU OP17d (Q2/4)	
16.50 – 17.35				OTU AP16b/c (Q1/3) OTU OP17d (Q2/4)	



Organisation Sport

Stand 01.19



Verteilerliste

- Alle Sportlehrpersonen (print)
- Hausmeister SQ 101 (print)
- Hausmeister AU 70 (print)
- Sekretariate Grundbildung (AT/EE/IT) (elektronisch)
- Rektorat (elektronisch)
- Technischer Dienst (elektronisch)
- Verantwortlicher Sport in der Schulleitung: Klaus Schmid (elektronisch)
- Stundenplaner der einzelnen Abteilungen (AT/EE/IT) (elektronisch)

Kontaktliste aktuelle Sportlehrpersonen TBZ

Bitzer Janine	079 779 22 92	janine.bitzer@tbz.ch
Bärfuss Matthias	076 496 17 39	matthias.baerfuss@tbz.ch
Grässlin Ralph	079 195 71 50	ralph.graesslin@tbz.ch
Hoidn Katenka	078 841 75 66	katenka.hoidn@tbz.ch
Krensler Christian	078 753 50 00	christian.krensler@tbz.ch
Otuyelu Yinka	079 669 87 65	olayinka.otuyelu@tbz.ch
Plüss Andreas	079 678 15 02	andreas.pluess@tbz.ch
Reiser Caspar	078 669 06 65	caspar.reiser@tbz.ch
Rüdisühli Res	079 670 79 57	andreas.ruedisuehli@tbz.ch
Schirmer Gery	076 337 30 70	schirmer.gerhard@tbz.ch
Spinas Franco	076 558 75 41	franco.spinass@tbz.ch
Steiger Felix	076 366 13 64	felix.steiger@tbz.ch
Taverner Christian	076 530 79 39	christian.taverner@tbz.ch
von Grünigen Bernhard	076 385 00 10	bernhard.vongruenigen@tbz.ch
Zraggen Urs	079 695 34 39	urs.zraggen@tbz.ch

Wichtige Telefonnummern

	extern		intern
Hausdienst	044 446 95 60	Kraftraum	190
Sekretariat EE	044 446 95 95	Kletterhalle	189
Sekretariat IT	044 446 96 60	Sporthalle 701.1	194
Sekretariat AT	044 446 96 46	Sporthalle 901.1	195
Hans-Peter Bratschi	079 585 95 19	Sportlehrerzimmer	501
		Hauswart	510