



Technische Berufsschule Zürich TBZ

Hallenbelegung Sport 23/24
Frühjahrssemester

Version 1 vom 17.02.2024

Rotationsplan Sport Schuljahr 2023/2024

Herbstsemester

Woche	Datum Wo-Beginn	Halle 901	Halle 701	Kletterhalle Fitnessraum	Quartal
34	21.08.	AT	EE	IT	1
35	28.08.	AT	EE	IT	1
36	04.09.	AT	EE	IT	1
37	11.09.	AT	EE	IT	1
38	18.09.	IT	AT	EE	1
39	25.09.	IT	AT	EE	1
40	02.10.	IT	AT	EE	1
41	09.10.	Herbstferien			
42	16.10.	Herbstferien			
43	23.10.	EE	IT	AT	1
44	30.10.	EE	IT	AT	1
45	06.11.	EE	IT	AT	1
46	13.11.	AT	EE	IT	2
47	20.11.	AT	EE	IT	2
48	27.11.	AT	EE	IT	2
49	04.12.	IT	AT	EE	2
50	11.12.	IT	AT	EE	2
51	18.12.	IT	AT	EE	2
52	25.12.	Weihnachtsferien			
1	01.01.	Weihnachtsferien			
2	08.01.	EE	IT	AT	2
3	15.01.	EE	IT	AT	2
4	22.01.	EE	IT	AT	2
5	29.01.	EE	IT	AT	2
6	05.02.	Sportferien			

Rotationsplan Sport Schuljahr 2023/2024

Frühjahrssemester

Woche	Datum Wo-Beginn	Halle 901	Halle 701	Kletterhalle Fitnessraum	Quartal
7	12.02.	Sportferien			
8	19.02.	AT	EE	IT	3
9	26.02.	AT	EE	IT	3
10	04.03.	AT	EE	IT	3
11	11.03.	IT	AT	EE	3
12	18.03.	IT	AT	EE	3
13	25.03.	IT	AT	EE	3
14	01.04.	EE	IT	AT	3
15	08.04.	EE	IT	AT	3
16	15.04.	EE	IT	AT	3
17	22.04.	Frühjahrsferien			
18	29.04.	Frühjahrsferien			
19	06.05.	AT	EE	IT	3
20	13.05.	AT	EE	IT	4
21	20.05.	AT	EE	IT	4
22	27.05.	IT	AT	EE	4
23	03.06.	IT	AT	EE	4
24	10.06.	IT	AT	EE	4
25	17.06.	IT	AT	EE	4
26	24.06.	EE	IT	AT	4
27	01.07.	EE	IT	AT	4
28	08.07.	EE	IT	AT	4
29	15.07.	Sommerferien			

Stundenplan Abteilung AT (= Belegungsplan Garderobe SQ 601)

	Montag	Dienstag	Mittwoch	Donnerstag	Freitag
07.15 – 08.00					
08.00 – 08.45	TOA AF23b	TOA AM21a	TOA AF21a	RUD CS20b	RUD AA23b
08.50 – 09.35	TOA AF23c	TOA AM22a	TOA CS23a	RUD AA22b	RUD AF23e
09.55 – 10.40		TOA AF23a	TOA AF22e	TAV CS21a	RUD CR23b
10.45 – 11.30	TOA AF21d	TOA AM20a		RUD AM23b	RUD AM21b
11:35 – 12:20	TOA AF21e	TAV CR22a	TOA AF21b		
12.25 – 13.10				YOGA (12.05 – 12.50)	
13.20 – 14.05	RUD AA23a	TAV AF22b	TAV AA22a	RUD AM20b	RUD AF22c
14.10 – 14.55	RUD CS20a	TOA AF22d	RUD CS21a	RUD CS23b	RUD AM22b
15.15 – 16.00	RUD AF22a	TOA CR22b	RUD CS21b	RUD AM23c	RUD CS22a
16.05 – 16.50	TAV AM23a	TOA AF21c	RUD AF23d		TAV CR23a

Stundenplan Abteilung EE (= Belegungsplan Garderobe SQ 602)

	Montag	Dienstag	Mittwoch	Donnerstag	Freitag
07.10 – 07.55	PLU ME22c GRU EI22a (Halle IT)	GRL EI23c	PLU ME23b	PLU EP23b	GRL EI21g
08.05 – 08.50	PLU EP21b	GRL EI21d	PLU MM23a	PLU ME22b	GRL GI23a
09.00 – 09.45	PLU BEN23a	GRL MM22a		PLU EI23a	GRL ME23d
10.15 – 11.00		GRL EN22a	PLU MM21a	PLU ME23c	GRL EN23a
11.10 – 11.55	PLU EI21b	GRL GI22a	PLU EI22d	PLU BEN22a	BAR EN21a
12.05 – 12.50		TOA OP23b (Q1-4) (Abt. IT)	GRL VF22b	GRL EI23e	
13.00 – 13.45	PLU ME22a	BAR EI22c	GRL EI23b	PLU EI21e	GRL EI22e
13.55 – 14.40	GRU EP21a	GRL EI21f	GRL VF21a/b	GRL MM21b	GRL EI23f
14.50 – 15.35			BAR EI22g	GRL EI23d	
15.45 – 16.30	KRE VF22a	GRL VF23a	GRL EI21a	GRL VF23b	GRU EP22b
16.40 – 17.25		GRL GI21a BAR ME23a (Halle AT, ab 16.50)	KRE EP22a	GRL EP23a BAR EI22b (Halle AT, ab 16.50)	

Stundenplan Abteilung IT 1. Quartal (= Belegungsplan Garderobe SQ 603)

	Montag	Dienstag	Mittwoch	Donnerstag	Freitag
08.10 – 08.55	OTU ICT23d (Q1-4)	REC ICT23a (Q1-4)	REC OP22b (Q1-4)	OTU OP22e (Q1/3)	TOA PE22e (Q1-4)
09.05 – 09.50	OTU ICT23d (Q1-4)	REC ICT23a (Q1-4)		OTU OP22e (Q1/3)	TOA PE22e (Q1-4)
10.10 – 10.55	OTU PE22a/b (Q1-4)	REC PE23f (Q1-4)	REC OP22c (Q1/3)	OTU PE23d/e (Q1-4)	
11.05 – 11.50	OTU PE22a/b (Q1-4)	REC ICT23b (Q1-4)	REC OP22c (Q1/3)	OTU ICT23e (Q1-4)	
12.00 – 12.45	OTU ICT22d (Q1-4)	REC ICT23b (Q1-4) TOA OP23b (Q1-4) (Halle EE)		REC PE22c (Q1-4)	
13.00 – 13.45	TOA AP23a/b (Q1-4)	REC OP23c (Q1-4)		REC OP23e (Q1/3)	
13.55 – 14.40	OTU BI22a (Q1-4)	REC ICT23c (Q1-4)	REC ICT22b (Q1-4)	REC OP23e(Q1/3)	TOA PE23c (Q1/3)
15.00 – 15.45	OTU BI22a (Q1-4)	SGE AP22a/b (Q1-4)	REC ICT21b (Q1-4)	REC AP23c/d (Q1-4)	TOA PE23c (Q1/3)
15.55 – 16.40	OTU ICT22e (Q1/3)	SGE OP23a (Q1/3)	REC ICT21a (Q1/3)	REC AP22c/d (Q1/3)	TOA ICT21e (Q1/3)
16.50 – 17.35	OTU ICT22e (Q1/3)	SGE OP23a (Q1/3)	REC ICT21a (Q1/3)	REC AP22c/d (Q1/3)	TOA ICT21e (Q1/3)

Stundenplan Abteilung IT 2. Quartal (= Belegungsplan Garderobe SQ 603)

	Montag	Dienstag	Mittwoch	Donnerstag	Freitag
08.10 – 08.55	OTU ICT23d (Q1-4)	REC ICT23a (Q1-4)	REC OP22b (Q1-4)	OTU OP23f (Q2/4)	TOA PE22e (Q1-4)
09.05 – 09.50	OTU ICT23d (Q1-4)	REC ICT23a (Q1-4)		OTU OP23f (Q2/4)	TOA PE22e (Q1-4)
10.10 – 10.55	OTU PE22a/b (Q1-4)	REC PE23f (Q1-4)	REC ICT22c (Q2/4)	OTU PE23d/e (Q1-4)	TOA ICT22f (Q2/4)
11.05 – 11.50	OTU PE22a/b (Q1-4)	REC ICT23b (Q1-4)	REC ICT22c (Q2/4)	OTU ICT23e (Q1-4)	TOA ICT22f (Q2/4)
12.00 – 12.45	OTU ICT22d (Q1-4)	REC ICT23b (Q1-4) TOA OP23b (Q1-4) (Halle EE)		REC PE22c (Q1-4)	
13.00 – 13.45	TOA AP23a/b (Q1-4)	REC OP23c (Q1-4)		REC OP23d (Q2/4)	
13.55 – 14.40	OTU BI22a (Q1-4)	REC ICT23c (Q1-4)	REC ICT22b (Q1-4)	REC OP23d (Q2/4)	TOA PE22d (Q2/4)
15.00 – 15.45	OTU BI22a (Q1-4)	SGE AP22a/b (Q1-4)	REC ICT21b (Q1-4)	REC AP23c/d (Q1-4)	TOA PE22d (Q2/4)
15.55 – 16.40	OTU PE23a/b (Q2/4)	SGE OP22a (Q2/4)		REC OP22d (Q2/4)	TOA PE21d (Q2/4)
16.50 – 17.35	OTU PE23a/b (Q2/4)	SGE OP22a (Q2/4)		REC OP22d (Q2/4)	TOA PE21d (Q2/4)

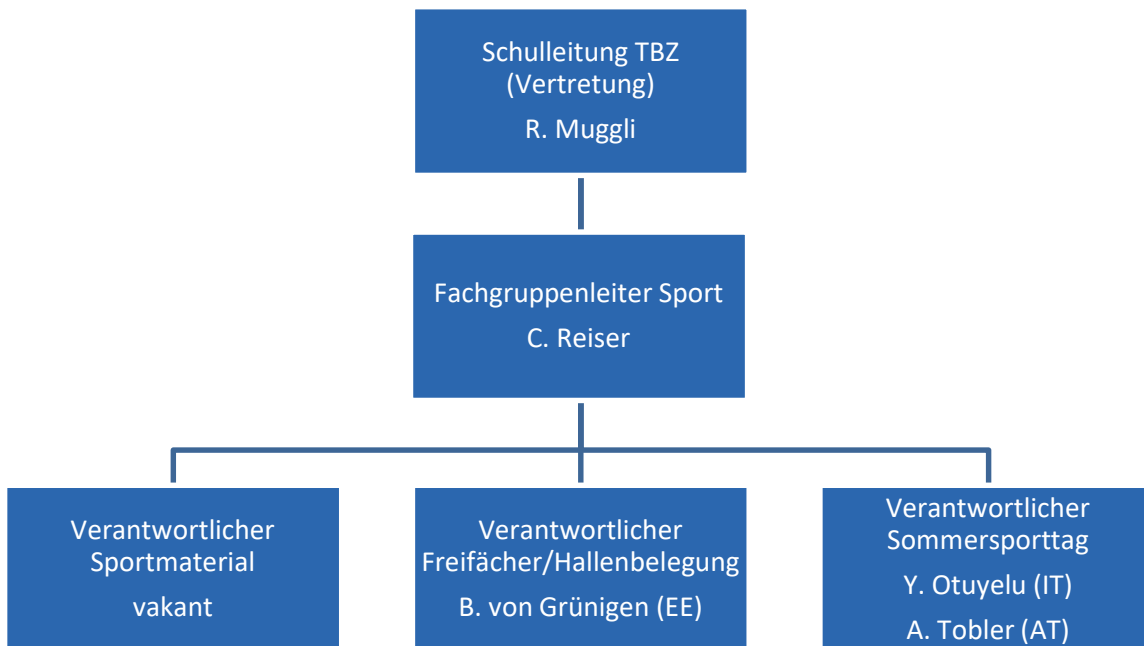
Stundenplan Abteilung IT 3. Quartal (= Belegungsplan Garderobe SQ 603)

	Montag	Dienstag	Mittwoch	Donnerstag	Freitag
08.10 – 08.55	OTU ICT23d (Q1-4)	REC ICT23a (Q1-4)	REC OP22b (Q1-4)	OTU OP22e (Q1/3)	TOA PE22e (Q1-4)
09.05 – 09.50	OTU ICT23d (Q1-4)	REC ICT23a (Q1-4)		OTU OP22e (Q1/3)	TOA PE22e (Q1-4)
10.10 – 10.55	OTU PE22a/b (Q1-4)	REC PE23f (Q1-4)	REC OP22c (Q1/3)	OTU PE23d/e (Q1-4)	
11.05 – 11.50	OTU PE22a/b (Q1-4)	REC ICT23b (Q1-4)	REC OP22c (Q1/3)	OTU ICT23e (Q1-4)	
12.00 – 12.45	OTU ICT22d (Q1-4)	REC ICT23b (Q1-4) TOA OP23b (Q1-4) (Halle EE)		REC PE22c (Q1-4)	
13.00 – 13.45	TOA AP23a/b (Q1-4)	REC OP23c (Q1-4)		REC OP23e (Q1/3)	
13.55 – 14.40	OTU BI22a (Q1-4)	REC ICT23c (Q1-4)	REC ICT22b (Q1-4)	REC OP23e(Q1/3)	TOA PE23c (Q1/3)
15.00 – 15.45	OTU BI22a (Q1-4)	SGE AP22a/b (Q1-4)	REC ICT21b (Q1-4)	REC AP23c (Q1/3)	TOA PE23c (Q1/3)
15.55 – 16.40	OTU ICT22e (Q1/3)	SGE OP23a (Q1/3)	REC ICT21a (Q1/3)	REC AP22c/d (Q1/3)	TOA ICT21e (Q1/3)
16.50 – 17.35	OTU ICT22e (Q1/3)	SGE OP23a (Q1/3)	REC ICT21a (Q1/3)	REC AP22c/d (Q1/3)	TOA ICT21e (Q1/3)

Stundenplan Abteilung IT 4. Quartal (= Belegungsplan Garderobe SQ 603)

	Montag	Dienstag	Mittwoch	Donnerstag	Freitag
08.10 – 08.55	OTU ICT23d (Q1-4)	REC ICT23a (Q1-4)	REC OP22b (Q1-4)	OTU OP23f (Q2/4)	TOA PE22e (Q1-4)
09.05 – 09.50	OTU ICT23d (Q1-4)	REC ICT23a (Q1-4)		OTU OP23f (Q2/4)	TOA PE22e (Q1-4)
10.10 – 10.55	OTU PE22a/b (Q1-4)	REC PE23f (Q1-4)	REC ICT22c (Q2/4)	OTU PE23d/e (Q1-4)	TOA ICT22f (Q2/4)
11.05 – 11.50	OTU PE22a/b (Q1-4)	REC ICT23b (Q1-4)	REC ICT22c (Q2/4)	OTU ICT23e (Q1-4)	TOA ICT22f (Q2/4)
12.00 – 12.45	OTU ICT22d (Q1-4)	REC ICT23b (Q1-4) TOA OP23b (Q1-4) (Halle EE)		REC PE22c (Q1-4)	
13.00 – 13.45	TOA AP23a/b (Q1-4)	REC OP23c (Q1-4)		REC OP23d (Q2/4)	
13.55 – 14.40	OTU BI22a (Q1-4)	REC ICT23c (Q1-4)	REC ICT22b (Q1-4)	REC OP23d (Q2/4)	TOA PE22d (Q2/4)
15.00 – 15.45	OTU BI22a (Q1-4)	SGE AP22a/b (Q1-4)		REC AP23d (Q2/4)	TOA PE22d (Q2/4)
15.55 – 16.40	OTU PE23a/b (Q2/4)	SGE OP22a (Q2/4)		REC OP22d (Q2/4)	TOA PE21d (Q2/4)
16.50 – 17.35	OTU PE23a/b (Q2/4)	SGE OP22a (Q2/4)		REC OP22d (Q2/4)	TOA PE21d (Q2/4)

Organisation TBZ Sport



Leitung Freifach Fitness (17:35 – 18:35 Uhr)

Wird aktuell nicht angeboten!

Verteilerliste

- Alle Sportlehrpersonen (print und elektronisch)
- Hausmeister SQ 101 (print)
- Hausmeister AU 70 (print)
- Sekretariate Grundbildung (AT/EE/IT) (elektronisch)
- Rektorat (elektronisch)
- Informatik-Dienst (elektronisch)
- Verantwortlicher Sport in der Schulleitung: R. Muggli (elektronisch)
- Stundenplaner der einzelnen Abteilungen (AT/EE/IT) (elektronisch)
- Ablage auf TBZ Campus: «Sport» → «Dokumente» → «09 Allgemeine Infos für alle»

Kontaktliste aktuelle Sportlehrpersonen TBZ

Bärfuss Matthias (BAR)	076 496 17 39	matthias.baerfuss@tbz.ch	EE: 5 Lektionen
Grässlin Ralph (GRL)	079 195 71 50	ralph.graesslin@tbz.ch	EE: 23 Lektionen
Tobler Alain (TOA)	079 762 17 93	alain.tobler@tbz.ch	AT/IT: 24 Lektionen (15 AT / 9 IT)
Krensler Christian (KRE)	078 753 50 00	christian.krensler@tbz.ch	EE : 2 Lektionen
Otuyelu Yinka (OTU)	079 669 87 65	olayinka.otuyelu@tbz.ch	IT : 13 Lektionen
Plüss Andreas (PLU)	079 678 15 02	andreas.pluess@tbz.ch	EE: 15 Lektionen
Reiser Caspar (REC)	078 669 06 65	caspar.reiser@tbz.ch	IT: 18.5 Lektionen
Rüdisühli Res (RUD)	079 670 79 57	andreas.ruedisuehli@tbz.ch	AT: 19 Lektionen
Schirmer Gery (SGE)	076 337 30 70	schirmer.gerhard@tbz.ch	IT: 3 Lektionen
Taverner Christian (TAV)	076 530 79 39	christian.taverner@tbz.ch	AT: 6 Lektionen
von Grünigen Bernhard (GRU)	076 385 00 10	bernhard.vongruenigen@tbz.ch	EE: 3 Lektionen

Wichtige Telefonnummern

	extern		intern
Hausdienst	044 446 95 60	Kraftraum	190
Sekretariat EE	044 446 95 95	Kletterhalle	189
Sekretariat IT	044 446 96 60	Sporthalle 701.1	194
Sekretariat AT	044 446 96 46	Sporthalle 901.1	195
Hans-Peter Bratschi	079 585 95 19	Sportlehrerzimmer	501
		Hauswart	510